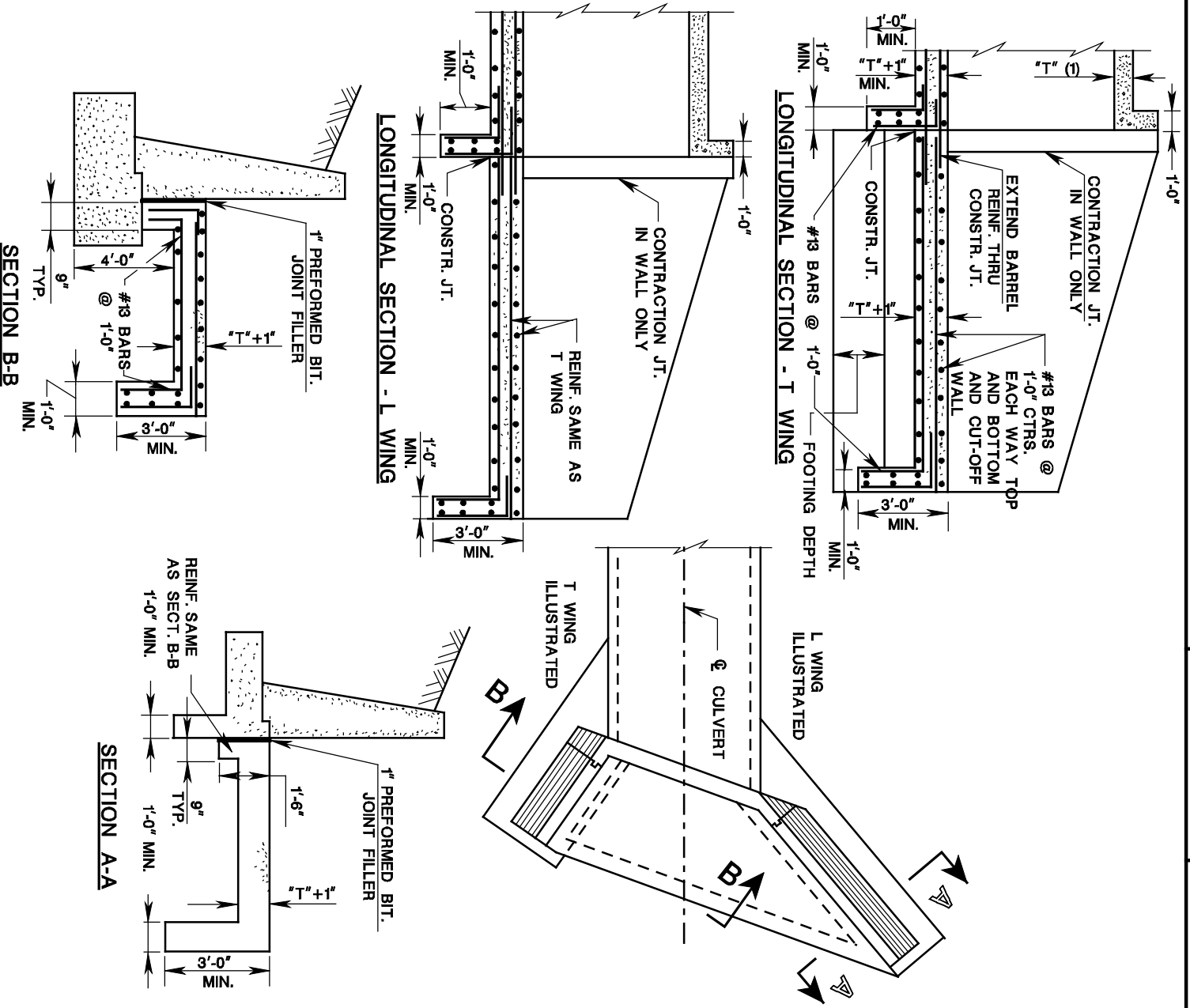


PAVED APRONS FOR BOX CULVERTS

ISSUED: 2009

PLATE
3.12-3



NOTES:

1. "T" IS EQUAL TO THE TOP SLAB THICKNESS.
2. A MINIMUM 3'-0" DEEP CUT OFF WALL (CURTAIN WALL) IS REQUIRED WHEN CULVERT DOES NOT HAVE A PAVED APRON.
3. A WATER STOP SHALL BE PROVIDED IN THE CONTRACTION JOINT IN THE RETAINING WALL.